



Faculty of Dental Medicine



Umm Al Qura University

Bachelor Degree In Dental Medicine and Surgery

Scientific Research Office Booklet

Academic Year 2020-2021



Table of content

Table of Contents

1. Introduction:.....	2
2. Alignment of program mission and goals to that of the University and the Faculty:	3
3. The Organizational structure of the research office at UQUDent:	6
4. Research Office Units:	7
5. Research Office Committees:	9
6. UQUDent Research plan:.....	10
7. Achievements Per Unit:.....	14
8. Scientific Research Activities Unit:	43
9. Laboratory Research Unit.....	46
10. Annual Research Day:	47
11. Program Performance Indicators that Related to The Scientific Research:	48
12. Challenges and development opportunities:	49

1. Introduction:

Scientific research is one of the most important elements on which the Kingdom's vision 2030 depends, and based on the vision of Umm Al-Qura University, which focuses on the importance of leadership in scientific research, and for the university to be a documented research reference in the dissemination of science based on scientific evidence and strengthening the spirit of competition among researchers.

The goal for the scientific research office to support scientific research in the Faculty of Dentistry, Umm Al Qura University (UQU Dent). Furthermore, the scientific research office is eager to create an outstanding research environment for staff, students and researchers. Subsequently, enabling scientific research advances in dental field.

The mission for the scientific research office is to create integrated services, transparent research administration, infrastructure, and streamlined processes. As well as support the needs of the UQU DENT research community and Broadens awareness of the value of research.

2. Alignment of program mission and goals to that of the University and the Faculty:

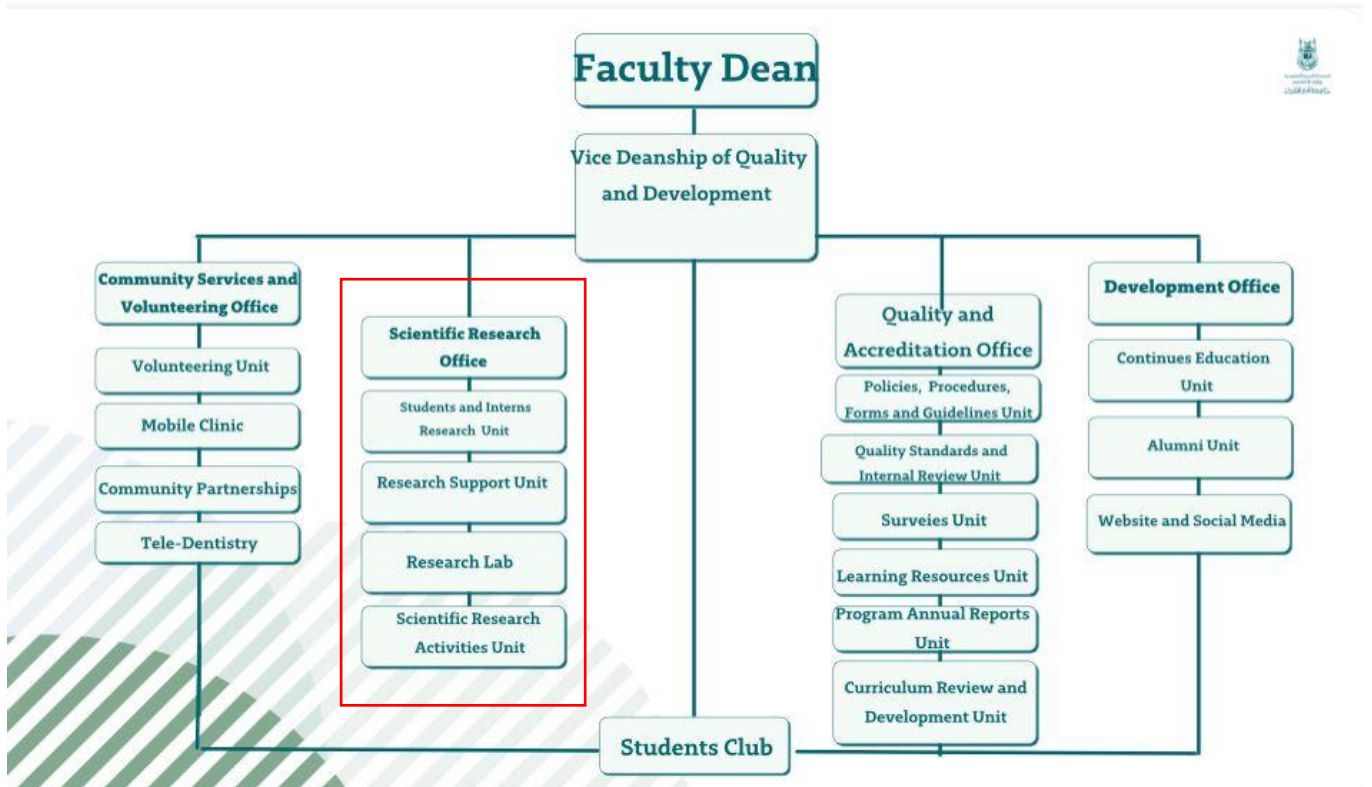
Research office mission is consistent and supportive with the university, faculty and program mission according to the following table:

Level	Mission/goal statement		Scientific research
University	Mission	التميز في التعليم والبحث والابتكار بما يسهم في تنمية الاقتصاد المعرفي وخدمة المجتمع منطلقين من عمقنا العربي والإسلامي	Yes
	Goals	1. تقديم برامج تعليمية نوعية لإعداد طالب منافس عالمياً.	
		2. تحسين جودة مخرجات البحث العلمي.	Yes
		3. تطوير منظومة الابتكار وتوجيهها لتعزيز الاقتصاد المعرفي.	Yes
		4. رفع كفاءة الموارد والحوكمة لتحقيق التميز في العمل المؤسسي.	
		5. تعزيز مكانة الجامعة عالمياً بعمقها العربي والإسلامي وتفعيل دورها المجتمعي.	
College	Mission	To offer an elevated standard of medical education for the students and practitioners in the oral and dental health field and support the scientific research in Basic and clinical sciences along with serving the community in accordance with the mission of Umm Al Qura University.	Yes
College	Goals	1. Qualifying and graduating high-level dentists, in terms of science, knowledge, and clinical skills, to provide treatment services.	
		2. Meeting the labor market's need of dentists.	
		3. Providing quality treatment services to patients in all dental specialties, offered by students under the supervision of a staff of professors who have both scientific and practical experience and with the application of modern technologies in the areas of treatment and diagnosis.	

Level	Mission/goal statement		Scientific research
		4. Contributing to the continuing medical education of the doctors of our beloved Kingdom of Saudi Arabia.	
		5. Preparing and supporting scientific research to find appropriate solutions to the problems of oral and dental health in the community.	Yes
		6. Providing medical and technical advice to the different state sectors.	
		7. Spreading health awareness in the community and the necessary prevention methods to maintain oral and dental health.	
Program	Mission	To provide the dental students with sound scientific understanding of technical principles for the clinical aspects of dentistry, underpinned by integrated knowledge and skills of the biological and clinical medical sciences. Graduates of this program develop a holistic view of patient's care, accept their professional responsibilities, consider Islamic beliefs and values as well as demonstrate an appropriate level of professional competence. Moreover, promoting scientific research in basic & clinical sciences and serving the community in accordance with the mission of Umm Al Qura University.	Yes
	Goals	1. To provide a high scientific environment enough to qualify dentists with high qualifications committed to the Islamic morals, national identity and medical proficiency and work with team spirit preserving the uniqueness of each member.	
		2. To qualify and train a generation of aware doctors fitting all	Yes

Level	Mission/goal statement		Scientific research
		international standards of dentistry required to be eligible for the license for practitioners and acceptance in local or international postgraduate programs .	
		3. To qualify graduates to be responsible for elevating the quality of medical service in the region and continuous effort on self-development and constant self-education.	
		4. To qualify graduates committed to joining scientific research in different branches of dentistry and follow evidenced-based principles of dentistry.	Yes

3. The Organizational structure of the research office at UQU Dent:



4. Research Office Units:

4.1. Undergraduate and Intern Research Unit:

Missions:

1. Supporting scientific research and motivating and engaging students in scientific research in order to prepare them for the requirements of the labor market.
2. Facilitating the graduating students research procedures, starting with the selection of the subject and the selection of the supervisor.
3. Motivating students and internship doctors to participate in the Annual Research Day at UQU Dent, and they can participate with a scientific poster or an oral presentation.
4. Motivating students and interns to publish scientific publications in international journals

4.2. Scientific Research Activities Unit:

Missions:

- 1- Creating and activating the various research activities such as Journal Clubs, Scientific debates, etc. in the faculty at the level of faculty members, students or interns after the necessary coordination.
- 2- Ensuring the integration of what the unit offers with the student club's research activities.

4.3.Laboratory Research Unit:

Missions:

- 1- Inventory of research production and existing research in the research laboratory of the faculty and submit its reports periodically.
- 2- Ensure the progress of scientific research work in the laboratory according to the models and regulations.
- 3- Raising the needs of the laboratory of equipment, consumables and maintenance.
- 4- Supporting lab users and familiarizing them with the devices.

4.4.Research Services and Support Unit:

Missions:

- 1- Working on activating the scientific research services at the faculty in coordination with the Deanship of Scientific Research and the University Vice Presidency for Graduate Studies and Scientific Research.
- 2- Finding opportunities to obtain research support and coordinating with the relevant university authorities to achieve this.
- 3- Working on activating research services and consultations related to dental research for a fee (such as revising written research and pre-publication services) and coordinating that with the Institute of Research and Consulting Studies.

5. Research Office Committees:

Multiple committees serve the research office.

5.1. Faculty Scientific Research Committee:

It consists of scientific research office head and the office unit supervisors, in addition to the heads of the scientific research and community service committees in the scientific departments.

Members' duties:

- 1 - Attending the meetings of the Scientific Research Service Office Committee at the faculty (at least one member from each department) to contribute to the development of the office's plans and initiatives, implement the work of its various units, and provide it with the required data.
- 3 - Contribute to research activities at the university and faculty levels.
- 4 - Coordination between scientific departments and divisions and between the Office of Scientific Research (representing the office in the department or division and representing the division or division in the office).
- 5 - A coordinator is identified for each department who submits the office's proposals for discussion in the department councils.

5.2. Departmental scientific committees:

Every academic department has its own research committee, The chairperson and members of these committees are chosen by the heads of the departments and these committees are working together to achieve the research plan of the faculty.

6. UQUdent Research plan:

Element	Required Activities	Implementation Mechanisms	Implementation Responsibility	Time Period
Assessing the current status of scientific research in the faculty-	determining the priorities of scientific research. Determining the incentives and obstacles to scientific research in the faculty. - Gathering information about faculty research, activities and research topics in the faculty.	Gathering information through the scientific research committees in the departments	Committee representatives	
List of topics that need to be studied	- Lack of adequately equipped research laboratories. Weak communication and lack of coordination between the faculty departments and between the faculty and local, regional or international research centers. There are no research	Providing the deficiencies of the laboratories necessary for the scientific research of the College. - Committee members to act as a means of communication between the different divisions of the department. - Creating research activities in the department for students.	Head of Research Laboratory Unit. Scientific Research Activities Unit. Committee Representatives	Beginning of The Academic Year.

	activities in the department for students.			
Determine the needs of the community	To be determined at a later meeting of the Committee		Scientific Committee Members.	
Create a database of research activities in the faculty.	Creating a database of the department's research or the college's research activities and topics.	Data base: Excel sheet.	Committee representatives	End of the year
Ways to find sources of funding for scientific research	Communication with local, regional and international research centers - Searching for support for scientific research in the fields of oral and maxillofacial surgery and fixed and removable dental implants from the private sector and businessmen	Communicate with the Deanship of Scientific Research at the university. Communication with local research centers: KAIMRC KFMRC and others. Communication with international research centers: IADR AO and others	Head of Research Services and Support Unit.	6 months.
Sources of providing material and moral incentives for researchers.	Conducting periodic scientific sessions to introduce the published research to the faculty members. -	Carrying out periodic scientific sessions to introduce the published research to the faculty members, and the date to be held after the department councils.	Head of Scientific Research office. Head of Scientific Research Activities Unit.	Begging of each term

Involvement of students in the college's research plan.	Involvement of students, especially undergraduate and postgraduate students, in implementing the department's research plan. Make research presentations for students.	Participation of the department in the scientific research project for the internship stage Incorporating a research project into the department's courses for final-year students.	Head of Undergraduate and Intern Research Unit. Head of Scientific Research Activities Unit.	Beginning of academic year.
Marketing for some research available in the college	The college's participation in community service projects to introduce the college's scientific research activities. Communication with local, regional and international research centers.	Communicate with the Deanship of Scientific Research at the university. Communication with local research centers: KAIMRC KFMRC and others. Communication with international research centers: IADR AO and others	Head of Scientific Research office.	Every academic term.
Formation of a committee in the college for scientific research	Forming a committee in the college/ for scientific research that includes both Dr. Amani Haranda, Supervisor of the Scientific Research Office and Chairman of the Committee. Dr.. Amin Marghalani. Dr.. Hind Abdul Latif,	It was formed.	Vice Dean of Quality and Development Head of Scientific Research office.	Beginning of the Academic Year.

	Dr.. Mohammed Al Harthy, Dr.. Khaled Abu Shamat, Dr.. Fahad Baqtian, Dr.. Elham Alsahafi, Dr. Abdul Rahman Yusuf			
--	---	--	--	--

7. Achievements Per Unit:

7.1. Undergraduate, Intern and Faculty Research Unit

Many researches have been conducted by students, interns and faculty. The following table is a list of students, intern and faculty publications per year.

Year	Publications
2010	El-Fasakhany FM, Mona MM, Hussain ME, Beyari MM, Abou-Elnoeman SA. Paraoxonase 1 (PON1) Glu 192 Arg Gene polymorphism and serum Paraoxonase Activity in rheumatoid arthritis among Egyptians. Tanta Medical Sciences Journal; (2010) 5, (1), 103-111.
2011	Khalifa ME, Fathy M. El Fasakhany, Metwaly HA and Noaman GS. Effect of platelet rich plasma on bone healing after Carnoy's solution application: A controlled blind study on rats. Cairo Dental Journal (2011); 27, (3) 655:663
2012	- Magdi A. El-Damarawi and Fathy M. Elfasakhany. Comparison of the Effect of Exercise and Pyridoxamine on Advanced Glycation End Products in Diabetic Rats. Tanta Medical Sciences Journal. (2012)7, (4), 26-38. -El Guindy A & Abo- Enien A: Study of Leptin and Serum Lipids in Egyptian patients with Chronic HCV with or Without Hepatic Steatosis. Tanta Medical Sciences Journal Vol. (7), No. (2), April (2012): 22-29. -Dobaei EG, Badr N, Abdel-Hamid DM: The Effect of Curing Techniques of Denture Base Resins on Strength Characteristics under Different Loading Modes. Egyptian Dental Journal; (2012) 58(4): 3927-3937, https://www.researchgate.net/publication/273123431_
2013	-Khalid Aboalshamat, Xiang-Yu Hou, Esben StrodL: Improving Dental and Medical Students' Psychological Health using a Self-Development Coaching Program: A Pilot Study, Journal of Advanced Medical Research, (2013): 3 (3), 45-57. -H. Huang, Michael Richards, Tamer Bedair, Henry W. Fields, J. Martin Palomo, William M. Johnston and Do-Gyoon Kim. Effects of orthodontic treatment on human alveolar bone density distribution. Clinical Oral Investigations. December 2013; 17 (9), 2033-2040

	<p>-Hammad HGH, Mostafa A, Mabrouk M, Hashem AM, Habib S, Badr NA, Oudadesse H, Mahmoud AA &El Gohary MI: Bioactivity and Drug Delivering Ability of a Chitosan/46S6 Melted Bioactive Glass Biocomposite Scaffold. <i>Interceram- International Ceramic Review</i>: (2013) 62 (6), 444-452 https://www.researchgate.net/publication/275339284_</p> <p>-Abou El-Magd R, Badr NA, Abou Nawareg M.: An Experimental Endodontic Material Based on Siwak Oil. <i>Egyptian Dental Journal</i>; April, (2013).59 (2): 1763:1771.</p>
2014	<p>Asmaa MM , Alaa A. El-Agamy , Ibtessam K.Afifi : Antimicrobial Effect of Different Root Canal Medicaments on <i>Enterococcus Faecalis</i> : in vitro Comparative Study. <i>Int J Dentistry Oral Sci</i>. December (2014):1(2), 15-20. https://scidoc.org/IJDOS-2377-8075-01-202.php</p> <p>-Shahid S. Siddiqui, Gias U. Ahmmad1, Sivakumar Loganathan, Fathy M. El-Faskhany, Zeba K. Siddiqui, Faisal K. Al-Allaf, Hanadi A. Lamfoon, Mohammad M. Beyari Microtubule Based OSM3 Family Kinesin-2 Motors are Involved in Endocytosis in Endothelial Cells. <i>Clinical Medicine and Diagnostics</i>, (2014). 4(1A): 8-14.</p> <p>-Shahid S. Siddiqui, Sivakumar Loganathan, Fathy M. El-Faskhan, Faisal A. Allaf, Zeba K. Siddiqui, Hanadi Lamfon, Mohammad Beyari). Overexpression of Cytokinesis Mediating Kinesin Motor KIF14 in Recurring Head and Neck Cancer: Implications for Regulation by MicroRNAs. <i>Clinical Medicine and Diagnostics</i>, (2014) 4(1A): 1-7.</p> <p>-Amin A M., El Guindy A, Tawfik A K, El Naghy W S and Mohammed E AZ: Diagnostic Value of Serum Glypican-3 in Differentiating Hepatocellular Carcinoma from non-Malignant Chronic Liver Disease: <i>Tanta Medical Sciences Journal</i> Vol. (9), No. (3), July 2014: PP 54-60.</p> <p>-Khalid Aboalshamat, Xiang-Yu Hou, Esben Strodl Psychological health of medical and dental students in Saudi Arabia: A longitudinal study, <i>Public Health Research</i>, (2014): 4 (5), 179 – 184</p> <p>-Khalid Aboalshamat, Xiang-Yu Hou, Esben Strodl Towards understanding self-development coaching programs, <i>International Journal of Psychology and Behavioral Sciences</i> 2014:4 (4), 136-145.</p> <p>-Marghalani AA, Omar S, Chen JW. Clinical and radiographic success of mineral trioxide aggregate compared with formocresol as a pulpotomy treatment in primary molars: a systematic review and meta-analysis. <i>J Am Dent Assoc</i>. 2014 Jul;145(7):714-21.</p>

	<p>-Marghalani A. Antibiotic prophylaxis reduces infectious complications but increases adverse effects after third-molar extraction in healthy patients. <i>J Am Dent Assoc.</i> 2014 May;145(5):476-8. doi: 10.14219/jada.2013.51. Review.</p> <p>-Marghalani AA, Alshahafi YA, Alshouibi EN. The cost of dental caries in Saudi Arabia. Putting numbers into context. <i>Saudi Med J.</i> 2014 Jan;35(1):93-4.</p> <p>-Alaa A. El-Agamy, Omayma K. Afifi and Abdelrazek A. Sheta Protective Role of Panax Gensing on Fluvoxamine Maleate Induced Structural Changes in the Submandibular Salivary Gland of Rats <i>Nature and Science</i> (2014);12(4) http://www.sciencepub.net/nature 21 ...</p> <p>-Tella E, Aldahlawi S, Eldeeb A and El Gzaerly H, The Effect of Systemic Delivery of Aminoguanidine versus Doxycycline on the Resorptive Phase of Alveolar Bone Following modified Widman Flap in Diabetic Rats: A Histopathological and Scanning Electron Microscope (SEM) study. <i>International Journal of Health Sciences, Qassim University,</i> (July-September 2014): Vol. 8, No. 3</p> <p>-Hamza MU; Hashem AM; Abdel-Hamid DM, Badr NA, Nassef TM. Validity of using newly introduced thermoplastic material in fabrication of a telescopic denture (2014).: Finite element stress analysis. <i>Cairo Dental Journal</i> (2014)30 (3), 1205-11</p> <p>-Hammad HGH; Hashem AM; Amany Mostafa A; Badr NA and Habib SI. Synthesis of a Chitosan-Based Scaffold for Bone Regeneration <i>E.D.J.</i> (2014) 60(2):1653:1663</p> <p>-Mohammed M Beyari and Rabab I Salama. Motivators and barriers to quit smoking among Saudi smokers. <i>Journal of American Science</i> 2014;10(12) http://www.jofamericanscience.org</p> <p>-Mohammed M. Beyari, Dan Strain, Chuan Silvia Li, Hanadi A. Lamfon. Conflict of Interest Reporting in Dentistry Meta-Analyses: A Systematic Review. <i>J Clin Exp Dent.</i> 2014;6(3):ei-i.</p> <p>-Mohammed M. Beyari, Alisha Hak, Chuan Silvia Li, Hanadi A. Lamfon. Conflict of Interest Reporting in Dentistry Randomized Controlled Trials: A Systematic Review. <i>The Journal of Evidence-Based Dental Practice.</i> DOI: 10.1016/j.jebdp.2014.06.002</p>
--	--

<p>2015</p>	<p>Amal M EL-Deeb, Hoda A Fansa, Omneya M Wahba: The Expression of Leptin(OB) in the human benign and malignant salivary tumors; Egyptian Dental Journal;61(3):3931-3938, 2015.</p> <p>-Lamfon H, Fansa H, Beyari M et. Al., The prevalence of oral and dental anomalies in mentally retarded children in holy Makkah community. Int J Health Sci Res. 2015; 5(6): 317- 324</p> <p>-Abu Nawareg MM, Zidan AZ, Zhou J, Chiba A, Tagami J and Pashley DH. Adhesive sealing of dentin surfaces in vitro: A review. American Journal of Dentistry. 2015; 28 (6): 321-332.</p> <p>-El-Khodary HM, Farsi DJ, Farsi NM and Zidan AZ. Sealing Ability of Four Calcium Containing Cements Used for Repairing Furcal Perforations in Primary Molars: An in vitro Study. The Journal of Contemporary Dental Practice. 2015; 16 (9): 733-739.</p> <p>-K Aboalshamat, XY Hou, E Strodl: Psychological well-being status among medical and dental students in Makkah, Saudi Arabia: A cross-sectional study, Medical teacher 2015: 37 (sup1), S75-S81.</p> <p>-K Aboalshamat, XY Hou, E Strodl: The impact of a self-development coaching programme on medical and dental students' psychological health and academic performance: a randomised controlled trial, BMC medical education (2015): 15 (1), 134.</p> <p>-K Aboalshamat: The effect of a self-development coaching program on the psychological health and the academic performance among medical and dental students in Saudi Arabia, Queensland University of Technology, 2015</p> <p>-K Aboalshamat, X Hou, E Strodl, K Aboalshamat, X Hou, E Strodl: Psychological well-being status among medical and dental students in Makkah, Saudi Arabia: A cross-sectional study Psychological well-being status among medical and dental ...2015</p> <p>-Mahmoud A Attia and Sherif S Hassan. Expression of Cytokeratin, Actin and Proliferating Cell Nuclear Antigen (PCNA) in Parotid Gland of Normal and Alloxan-Induced Diabetic Dogs. (Histological and Immunohistochemical Study). Journal: Cairo Dental Journal, CDJ. 2015 (May); VOL. (31) NO. (2)</p> <p>.</p> <p>-Badr, N & Fatehelbab, E. Does Bleaching Agent have A Detrimental Corrosive Effect on Dental Casting Alloys? International Journal of Health Sciences and Research. Int. J. Health Science Res (IJHSR). (2015) 5(6): pp330-339. http://www.ijhsr.org/IJHSR_Vol.5_Issue.6_June2015/47.pdf</p>
-------------	---

	<p>-Eldadamony, E.M., Badr, N.A., Hegazy, E.M., Fansa, H.A.& Helal, I. E. Efficiency of Different Physical Surface Modalities on Osseointegration of Titanium Alloy Implants. <i>Int. J. of Health Sciences & Research (IJHSR)</i>. (2015) 5 (5): pp203-215. http://www.ijhsr.org/archive_ijhsr_vol.5_issue5.html#sthash.ELpmvqz7.dpuf</p> <p>-El-Rashidy AA, Gad A, Abu-Hussein AG, Habib SI, Badr NA & Hashem A.A Chemical and Biological Evaluation of Egyptian Nile Tilapia (<i>Oreochromis Niloticas</i>) Fish Scale Collagen. <i>International Journal of Biological Macromolecules</i>. .(2015) 79 pp 618-626. http://www.sciencedirect.com/science/journal/01418130/79.</p> <p>-El-Rashidy AA, Gad A, Abu-Hussein AG, Habib SI, Badr NA & Hashem A.A Extraction and Characterization of Collagen Type I from Nile Tilapia Fish Scales. ; <i>EDJ</i>; .(2015) 61 pp327-332</p> <p>-Maher AR, El-Bardissy AA, El-Shahaby FA & Badr NA; The Adhesiveness of Two Different Nano-Based Restorative Materials Used in Pedodontics (An In-Vitro Comparative Study); <i>EDJ</i>; (2015) 61 (1) pp559-566</p> <p>-Bukhari OM, Sohrabi K, Tavares M, Factors affecting patients' adherence to orthodontic appointments. <i>American Journal of Orthodontics and Dentofacial Orthopedics</i> · March 2016; 149(3):319-24. DOI: 10.1016/j.ajodo.2015.07.040</p> <p>-Mohammed M Beyari and Rabab I Salama :Socioeconomic Factors Associated With Smoking in Saudi and Non-Saudi Smokers. <i>International Journal of Health Sciences & Research</i> June (2015):5; 6; www.ijhsr.org</p> <p>-Samia M. Elsherief ; Zainab Abdel-Salam Abdel-Latif and Nagla'a Abdel-Wahed, cone beam radiographic evaluation of the quality of obturation using a core-carrier system versus lateral compaction technique in single-rooted canals: an in-vitro study. <i>E.d.j.</i>2015 vol. 61, no. 2</p>
2016	<p>Abu Nawareg M, Elkassas D, Zidan A, Abuelenain D, Abu Haimed T, Hassan AH, Chiba A, Bock T, Agee K, Pashley DH. Is chlorhexidine-methacrylate as effective as chlorhexidine digluconate in preserving resin interfaces? <i>Journal of Dentistry</i>. 2016; 45: 7–13.</p> <p>-Yasser Maher El-Bouhi, The effect of preliminary acid etching and the addition of an intermediary layer of flowable composite on the microtensile bond strength of two current simplified adhesive systems to dentin. <i>Journal of American Science</i> 2016; 12(6)</p> <p>-AA Ali K. Alaboudi, Khalid T. Aboalshamat, Abdullah Mahfouz, Abdulmajeed Alobodi: Reasons for Teeth Extraction in Governmental</p>

Hospitals in Madinah City, Saudi Arabia, Journal of Dental and Medical Sciences 2016: 15 (7), 1-5.

-KTA Aboalshamat, A Khojah: Adjustable dental hand instrument,US Patent App. 14/388,623,2016

-Marglani OA, Alherabi AZ, Herzallah IR, Saati FA, Tantawy EA, Alandejani TA, Faidah HS, Bawazeer NA, Marghalani AA, Madani TA. Acute rhinosinusitis during Hajj season 2014: Prevalence of bacterial infection and patterns of antimicrobial susceptibility. Travel Med Infect Dis. 2016 Nov - Dec;14(6):583-587

-El-kwatehy WM, Youssef AR (2016) Salivary Biomarkers in Caries Affected and Caries Free Children. Int J Dentistry Oral Sci. (2016) 3(10), 348-352.

-Wahdan M. Elkwatehy, Abdel Razek A Sheta Dermatoglyphics as a Non-Invasive Anatomical Marker in Early Childhood Caries, International Journal of Dentistry and Oral Science (IJDOS) ISSN: 2377-8075 Nov 23, 2016
<https://www.researchgate.net/publication/312071491>

-Ohud S. Al-Zughaibi, Lujain A. Filimban, Salwa A. Aldahlawi, Prevalence of herbal supplement use among adult dental patients in Makkah city, Saudi Arabia. International Journal of Oral Health Dentistry; October-December 2016;2(4):232-235

-M. Al-Harthy, A. Michelotti, R. Ohrbach, T. List. Effect of Culture on Pain Sensitivity. J Oral Rehabil. 2016 Feb;43(2):81-8.

-Abdel-Rahman,F., Badr, N., Shoreibah, E.,Khafagy, M. & Motawea, I. Exploitation of 3D-Microporous Architecture Titanium Implant Surface as Local Drug Delivery System. Open Journal of Dentistry and Oral Medicine. (2016).4 (1):pp1-13

DOI: 10.13189/ojdom.2016.040101

http://www.hrpub.org/journals/jour_archive.php?id=80&iid=888

-Abdelrahim RA, Badr NA & Baroudi K): Effect of anodization and alkali-heat treatment on the bioactivity of titanium implant material (an in vitro study). J Int Soc Prev Community Dent.; (2016) 6(3):189-95.

<https://www.ncbi.nlm.nih.gov/pubmed/27382532>

doi: 10.4103/2231-0762.183107.

-Abdelrahim, RA, Badr, N.A. & Baroudi K. The Effect of Plasma Surface Treatment on the Bioactivity of Titanium Implant Materials (In Vitro). J. Int. Society of Preventive & Community Denti. (2016). 1(6): pp15-21.

	<p>DOI:10.4103/2231-0762.171592 PMID:27011927 http://www.jispcd.org/showBackIssue.asp?issn=2231-0762;year=2016;volume=6;issue=1;month=January-February -Hamouda IM and Faramay AMG Effect of Arch Form and Water Sorption on the Palatal Base Adaptation of ProBase Hot Versus the Conventional Heat Cured Acrylic Resin. Int J Dentistry Oral Sci. (2016) 03(2), 193-199. -Hamouda IM, Ibrahim DA, Alwakeel EE (2016) Influence of Sport Beverages on the Properties of Dental Restorative Glass Ionomers. Int J dent Oral Health (2016) 2(2). -Amr A Radi, Abdulrahman Almalki; Evaluation of retention of definitive impression for complete denture. Egyptian Dental Journal, Vol:62, No:4 October 2016. -Ahmed E. Rawas, Hanaa Samir Elattar :comparison between dental and basal arch forms in normal occlusion and class ii malocclusion utilizing cone-beam computed tomography. Egyptian Dental Journal. October, 2016: Vol:62. 4445:4450.</p>
2017	<p>- Alaa Muostafa Attia, Ahmed Dardir Mohamed, Ahmed Saeed Alharthi, Mohammed Ahmed Almutawwif, Almaqadi Abdullah Hamad, Waleed Masad Alhuthali: Severity of Chronic Periodontitis Associated with Two Major Risk Factors of Periodontal Disease in Makah City. Journal of Dentistry and Oral Care. 2017, 3(1):1-7. https://www.ommegaonline.org/article-details/Severity-of-Chronic-Periodontitis-Associated-with-Two-Major-Risk-Factors-of-Periodontal-Disease-in-Makah-City/1316</p> <p>- Alaa Moustafa Attia: Clinical and Radiographic Evaluation of Cortico-Cancellous Bone Mix Xenograft (Osteobiol Gen-Os®) in the Treatment of Human Periodontal Intrabony Defects. 2017, 63(4):1- https://www.researchgate.net/publication/315761720_Clinical_and_radiographic_evaluation_of_cortico-cancellous_bone_mix_xenograft_osteobiol_Gen-Os_in_the_treatment_of_human_periodontal_intrabony_defects</p> <p>- Abdallah Edrees MF, Moustafa Attia A, Abd Elsattar MF, Fahmy Gobran HG, Ismail Ahmed A: Course and Topographic Relationships of Mandibular Canal: A Cone Beam Computed Tomography Study. International Journal of Dentistry and Oral Science. 2017, 4(3): 44-449. https://scidoc.org/IJDOS-2377-8075-04-303.php</p> <p>- Alaa Moustafa Attia, Fathey Abdel Aziem Abozaid, Mohamed Fouad Edrees, Ibrahim Hammad Ibrahim: Evaluation of Immediate Dental Implant Augmented with Biphasic Calcium Phosphate Coated by Polylactide - co-Glycolide Versus to Immediate Dental Implant Only. International Journal of</p>

Dentistry and Oral Health. 2017, 3(4): 45-54.
<https://www.semanticscholar.org/paper/Evaluation-of-Immediate-Dental-Implant-Augmented-by-Attia-Abozaid/cc3ae6bfe7ece4a92133c58b35fad3e0b00125a5>

- Najlaa MAEman AEA, Ibrahim MM, Hazem MA, Khaled HEA and Douaa AED Regeneration of Pulp/Dentin-like tissue in immature Necrotic Permanent Dog teeth using Adipose Tissue-Derived Mesenchymal Stem Cells. JOral Hyg Health,2017-5:217
DOI:10.4172/2332-0702.-1000217 ISSN:2332-0702 Volume 5.issue 1

- Hanadi Lingawi, Yahia Maher, Ibtesam K. Afifi: Impact of Educational Intervention for Hand Hygiene on Dental Students' Knowledge, Attitude, and Bacterial Contamination Level on Hands. The Journal of Contemporary Dental Practice, December 2017;18(12):1164-1172
<https://www.ncbi.nlm.nih.gov/pubmed/29208792>

- Mawadah S. Mandourh, Noura R. Alhomaidhi, Nuha H. Fatani, Amjad S. Alsharif, Ghufraan K. Ujaimi, Ghaida'a M. Khan, Ibtesam K. Afifi: Awareness and implementation of infection control measures in private dental clinics, Holy Makkah, Saudi Arabia. Int J Infect Control 2017, 13 (1):1-14.
<http://www.ijic.info/article/view/17308>

- Ibtesam K. Afifi, Ebtehal A. Hamdy: Novel Diagnostic and Prognostic Immunological Markers for Chronic Periodontitis in Makkah Community. International Journal of Health Sciences and Research Vol.7; Issue: 1; pp.68-75 January 2017 http://www.ijhsr.org/archive_ijhsr_vol.7_issue1.html

- Abrar A Bannani ,AbdulAziz S Gul, Mohammad N Redwan, Wed A. Baghdadi, Amal M Eldeeb:The Role of Stem Cell Markers in the Diagnosis of Periodontitis. International journal of health science and research.Vol.7; Issue: 3; March 2017.

- Abutalib AM, Fensa H. Evaluation of the human enamel surface morphology after tooth bleaching followed by remineralizing agents. Int J Health Sci Res. 2017; 7(3):181-189.
- Abu Nawareg M, Abuelenain D, Elkassas D, Abu Haimed T, Al-Dharab A, Zidan A, Hassan AH, Pashley DH. Role of Dentin cross-linking agents in optimizing dentin bond durability. International Journal of Adhesion and Adhesives. 2017; 78: 83–88.

<ul style="list-style-type: none"> • K Aboalshamat Relationship of self-esteem with depression, anxiety, and stress among dental and medical students in Jeddah, Saudi Arabia. Journal of international medicine and dentistry(2017): 4 (2), 61-68. • K Aboalshamat, M Alzahrani, N Rabie, R Alharbi, R Joudah, S Khulaysi, ...The relationship between burnout and perfectionism in medical and dental students in Saudi Arabia, Journal of Dental Specialities(2017): 5 (2), 122-127, • Wahdan M. El-kwatehy, Abdelrahman Youssef, Salivary Alpha Defensin, Total Protein and Total Antioxidant in Children with Gingivitis. Salivary Biomarkers in Caries Affected and Caries Free Children. Int J Health Sci Res. 2017; 7(3):174-180. • Jaber Al-Zaed, Saleh Al-Ghamdi, Majed Ibrahim, Abdel-Rahman Youssef- Dental Anxiety among UQU Dental Clinics Patients. International Journal of Health Science and Research (IJHSR) Volume 7 Issue 5, May (2017): 101-104 • Abla Arafa, Salwa Aldahlawi, Adil Fathi, Assessment of the oral health status of Asthmatic children. Eur J Dent (2017); 11:357-63 • Tassos Irinakis, Valentin Dabuleanu and Salwa Aldahlawi, Complications during Maxillary Sinus Augmentation associated with interfering Septa: a new classification of Septa. The Open Dentistry Journal (2017), 11, 140-150. • M. Al-Harthy, T. List, A. Michelotti, R.Ohrbach: Influence of culture on pain comorbidity in women with and without temporomandibular disorder-pain: J Oral Rehabil. (2017) Jun;44(6):415-425. doi: 10.1111/joor.12499. Epub 2017 Mar 21. • Mariam Alkhater, Mohammad Al-Harthy. The Competence of Dental Staff and Students to Deal with Medical Emergencies at UQU DENT. Int J Sci Res. Feb. 2017 6(2):1147-1150. • -Al-Halal ZA, Khan NR, Lingawi HS. Radiographic prevalence of selected developmental dental anomalies. Int J Health Sci Res 2017;7(4):229-234.
--

Tashkandi FS, Hejazi LO, Lingawi HS. Patients' satisfaction with dental care services provided by educational dental hospital. *Int J Health Sci Res* 2017;7(6):135-142.

Lingawi HS, Maher YA, Afifi IK. Impact of educational intervention for hand hygiene on dental students' knowledge, attitude and bacterial contamination level on hands. *J Contemp Dent Pract* 2017;18(12):1-9.

- Baghdadadi WA, Bannani AA, Sheiko OA, Kenawi LM Comparison of post- obturation pain between single and multiple visit root canal treatment. *Int J Health Sci Res.* 2017; 7(5):95- 100.

- Swaimil GH, Kenawi LM. Quality of Endodontic Treatments Performed By Undergraduate Students at the Uqudent Using Rotary Nickel Titanium Files . *International Journal of Healthcare Sciences.* October 2017 – March 2018, 5(2): 345-353

- Toras FM, Hamouda IM Effect of Nano Filler on Microhardness, Diametral Tensile Strength and Compressive Strength of Nano-Filled Glass Ionomer. *Int J Dentistry Oral Sci.* (2017) 4(2), 413-417.

- Al-Towairqi WA, Hamouda IM) Effect of Instrument Lubricant on Water Sorption and Solubility of Incrementally Applied Nanofilled Resin Composite. *J Nanotechnol Nanomed Nanobiotechnol* (2017): 4: 019.

- Noha A E S, Ibrahim M H, Amira M G, Ali H E S. Retention of Probase Hot Versus the Conventional Heat- Cured Acrylic Resin Denture bases. *Biomed J Sci & Tech Res* 1(4)-2017.

- Mohsen K. Aljabri, Tamer O. Ibrahim, Rayan M. Sharika, Removable partial dentures: Patient satisfaction and complaints in Makkah City, KSA *Journal of Taibah University Medical Sciences* April 2017,. <https://doi.org/10.1016/j.jtumed.2017.03.002>

- Banjar MM, Khafaji AM, Maher YA. Antimicrobial activity of hydrogen peroxide, sesame and gum arabic against streptococcus mutans. *Int J Health Sci Res.* 2017; 7(1):97-104

- Gul A, Banjar M, Redwan M et al. Influence of diabetes mellitus on dental health status. *Int J Health Sci Res.* 2017; 7(1):124-129.

- Alzughaibi OS, Filimban LA, Arafa AA. Assessment of Salivary Immunoglobulin A, α -amylase, pH and flow-rate effects on dental caries

	<p>experience of down's syndrome children in Makkah, Saudi Arabia. Int J Health Sci Res. 2017; 7(3):143-149.</p> <ul style="list-style-type: none"> • Ghofran M Badabaan, Abla Arafa, The relationship between salivary IgA level and dental caries in healthy school-aged children In Makkah Al-Mukarmah. International Journal of Health Science and Research (IJHSR) , June (2017): Volume 7 Issue 6 • Elbehairy R.A., Elmarsafy L.H., Ahmed I.H., Khafagi M.G: Fourier transform infrared spectroscopic analysis for healing sockets treated with a mixture Egyptian dental journal, (2017):Vol. 63, No. 2. • Asmaa Ashour, Reda A.Nofal , Samahir Bashraheel And Alaa Makki: Retrospective Analysis of Maxillofacial Trauma in Makkah, Egyptian dental journal 2017 vol3 number 5, I . S . S . N 0070-9484 • -Yousef Gasem Alfaifi, Moanes Soliman: Postoperative Hypersensitivity of Different Composite Resin Restoration. Int J Dent Health Sci 2017; 4(1):116-125 • Ghida MazenSubahi, Sumiah Rashidalmuhtadi and Hesham Samy Sadek: Betel Quid Consumption in Resident Population in Makkah: Report of Two Cases. Egyptian Dental Journal 2017 Vol 63: 711-714. • Yahia A Maher, Raid A Jastania, Mohamed M Beyari,: Variability in airborne bacteria and fungal population in Educational Dental Hospital, Umm Alqura University. International Journal of Health Sciences and Research; 2017, 7(2): 165-175.
2018	<ul style="list-style-type: none"> • Bashar A. Alzubaidy, Alaa Moustafa A, Abdel-Rahman Youssef: Evaluation of Gingival Crevicular Fluid and Serum Levels of Interleukin-20 in Periodontal Health and Disease. International Journal of Health Sciences and Research. 2018, 8(5): 135-139. http://www.ijhsr.org/IJHSR_Vol.8_Issue.5_May2018/21.pdf • Bshayer N. Wali , Ibtessam K. Afifi, Gehan F. Balata, Nadia A. Badr: Effect of an Experimental Mouthwash Extracted from Miswak (Salvadora Persica) on Cariogenic Bacteria and Dental Plaque Formation. International Journal of Current Research, January,)2018) Vol. 10, Issue, 01, pp.64070-64075 http://www.journalcra.com/monthly-archive/201801 • Al-Sihli AA, Elmarsafy, SM, Afifi IK. Correlation of dental caries with ABO blood group and salivary secretor status among female subjects, Makkah city, Saudi Arabia. Int J Health Sci Res. 2018; 8(1):85-93. http://www.ijhsr.org/archive_ijhsr_vol.8_issue1.html

- Njood Alshareef, Hala A. Abuel-Ela, Ibtessam K. Afifi: Macrophage Chemotactic Protein-1 and Interleukin-12 Levels in Gingival Crevicular Fluid in Patients with Periodontal Disease: A Cross Sectional Study. International Journal of Health Sciences & Research July (2018): 8(7); .68-75
http://www.ijhsr.org/archive_ijhsr_vol.8_issue7.html
- Arwa Ahmad Fallatah, Rania Hanafi, Ibtessam Afifi: Comparison of Cotinine Salivary Levels Between Smokers, Passive Smokers and Non-Smokers The Egyptian Journal of Hospital Medicine (January 2018): 70 (6), 982-989
https://ejhm.journals.ekb.eg/issue_1709_2082_Volume+70%2C+Issue+6%2C+Winter+2018.html
- Wael E. Jamil, Sahar M. Elmarsafy. Shear Bond Strength of Low Shrinkage Resin Composite to Resin Modified and Nano-Filled Glass Ionomer Cements. ADJ-for Girls. Jan 2018; Vol. 5, No. 1: 47-53.
- Shahad H Rajab, Sahar M. Elmarsafy, Mohammad S. Alsoufi. Effect of Chinese Green Tea on Enamel Surface Characteristics in an in-vitro Erosion Model. ADJ-for Girls. July 2018; Vol. 5, No. 3: 257-266.
- Amal M El-Deeb, Hoda A Fansa, Omneya M Wahba, The expression of Leptin in oral wound healing in diabetes mellitus. Vol 12 No 2 (2018): Mar-Apr
<https://ijhs.org.sa/index.php/journal/article/view/2111>
- Mansouri SA and Zidan AZ. Effect of Water Sorption and Solubility on Color Stability of Bulk-Fill Resin Composite. The Journal of Contemporary Dental Practice. 2018; 19 (9): 1129-1134.
- Ghaida Raja Althebeti, Fathy Mohamed Elfasakhany, Eman Abdulsattar Talla Evaluation of Interleukin-23 in Periodontal Health and Disease. Int. J. Health Science and Research. (2018) 8 (2):226-232
- -Fathy Mohamed Elfasakhany, Abdulah Mousa Karawagh, Shahid Saied Siddiqui Implications of Vitamin D Receptor Gene FokI and BsmI Polymorphisms in Type 2 Diabetes among Saudi Population. Int. J. Health Science and Research. (2018). 8(4):63-70

<ul style="list-style-type: none"> • -Mariam Faisal Aburuzaiza, Amal M. Aldeeb, Fathy M. Elfasakhany (2018). Study of Salivary Electrolytes in Diabetic and Non-Diabetic Patients with Active Caries. <i>Int. J. Health Science and Research.</i> (2018) 8(3):99-104 • -Fathy M. Elfasakhany, Magdi A. Eldamarawi, Ayman E. Khalil, Association between interleukin-17 gene polymorphism and rheumatoid arthritis among Egyptians. <i>Meta Gene</i> (2018) (16): 226–229 • -Amjad Alaauldeen, Fathy Elfasakhany, Amal Al-Deeb. Salivary Alkaline Phosphatase, Calcium and Phosphorous as Biochemical Markers in Chronic Periodontal Disease. <i>International Journal of Medical Research Professionals.</i> (2018) 4(3): 155-58. • Shahid S Siddiqui, Fathy El-Fasakhany, Sivakumar Loganathan and Ravi Salgia It's Elementary My Dear Watson: Cancer Counseling by Cognitive Computing; Do you Concur? <i>EC Pulmonology and Respiratory Medicine.</i> (2018)7, 525-529 • -Majed Amin Ashi and Yasser El-Bouhi, Adaptation of resin composite to enamel surface prepared by different cutting tools- SEM study. <i>Egyptian Dental Journal</i> Vol. 64, 1119:1124, July, 2018 • Wajdi Bardisi, Yasser El-Bouhi and Wahdan M. El-kwatehy. Cariogram and caries risk assessment for athelets. <i>Egyptian Dental Journal</i> July(2018): 64, 1181:1187, • KT Aboalshamat, AO Alsiyud, RA Al Sayed, RS Alreddadi, SS Faqiehi, ...The relationship between resilience, happiness, and life satisfaction in dental and medical students in Jeddah, Saudi Arabia, <i>Nigerian journal of clinical practice</i> 2018:21 (8), 1038-1043. • K Aboalshamat, W Salman, R Almezman, A Maghrabi, K Alamoudi, ...The Relationship between Loneliness and Suicidal Ideation in Private Medical and Dental Students in Jeddah, Saudi Arabia, <i>Journal of International Medicine and Dentistry</i> (2018):5 (1), 11-19, • Magdy Alabasiry, Sherif S. Hassan, and Safaa M. Altohamy. Expression of Cytokeratin 17 In Normal and Diabetic Submandibular Salivary
--

	<p>Gland. (Histological and Immunohistochemical Study), Journal: Tanta Dental Journal (2018), 15: 241–246</p> <ul style="list-style-type: none"> • Abdullah A Al-Harhi, Mohammed H Aljouidi, Mulham N Almaliki, Khalid A El-Banna, Laboratory Study of Micro-shear Bond Strength of Two Resin Cements to Leucite Ceramics using Different Ceramic Primers. The Journal of Contemporary Dental Practice, August 2018;19(8):918-924 • Salwa Aldahlawi, Abdel-Rahman Youssef, Syed Shahabuddin, Evaluation of chemokine cXcl10 in human gingival crevicular fluid, saliva, and serum as periodontitis biomarker. Journal of Inflammation Research 2018:11 • -Salwa Aldahlawi. “Dental Implant Maintenance for the General Dentist: When, Why and What to Do?”. EC Dental Science 17.9 (2018): 1570-1581. • -Salwa Aldahlawi, Angela Demeter, Tassos Irinakis, The effect of implant placement torque on crestal bone remodeling after 1 year of loading. Clinical, Cosmetic and Investigational Dentistry 2018:10 • -Tassos Irinakis, Salwa Aldahlawi, The dome technique: a new surgical technique to enhance soft-tissue margins and emergence profiles around implants placed in the esthetic zone. Clinical, Cosmetic and Investigational Dentistry 2018:10 • -M. Al-Harthy, T. List, R. Ohrbach, A. Michelotti. Cross-cultural differences in types and beliefs about treatment in women with temporomandibular disorder pain.[J Oral Rehabil. 2018 Sep;45(9):659-668. doi: 10.1111/joor.12683. Epub 2018 Jul 16. • -Mohsen K. Aljabri, Ibrahim Z. Gadibalban, , Aboelezz M. Kalboush, Hesham S. Sadek, Hassan H. Abed, Barriers to special care patients with mental illness receiving oral healthcare. A cross sectional study in the Holy City of Makkah, Saudi Arabia. Saudi Med J 2018; Vol. 39 (4) • -Rehab E Radi, Safinaz Abdelwahab, Nada Abdelaleem, Comparative Study between At- Home & In-Office Bleaching on Colour Stability and Teeth Sensitivity in Makkah City, Saudi Arabia. Journal: International Journal of Health Sciences and Research (IJHSR)2018, 8(2). P. 89-100
--	--

<ul style="list-style-type: none"> • -Hayaa Zaki, Safinaz Abdelwahab and Nada Abdel Aleem: Would nano-ormoceres be the new esthetic filling material replacing conventional resin composite? International Journal of Current Research May, (2018): 10(05), 69827-69829, • -Althebeti GR, Elfasakhani FM, Talla EA, Evaluation of interleukin-23 in periodontal health and disease. Int J Health Sci Res. 2018; 8(2): 226-232 • Bazaid DS, Kenawi LMM, The effect of intracanal cryotherapy in reducing postoperative pain in patients with irreversible pulpitis: a randomized control trial. Int J Health Sci Res. 2018; 8(2):83-88. • Ibrahim HM, Al-Wakeel EE, Badr NA, Waly MA, Abdel-Hamid MA, Moussa ME: In vivo Evaluation of a newly designed biodegradable magnesium alloy bone implant. Mansoura Journal of Dentistry, (2018) 5 (18). • Fakieh A, Al-Yamani D & Badr N: Tribological and Topographical Characteristics of Nano-Processed Coating for Aesthetic Restorative Materials. International Journal of Current Research, (2018)10, (09), 73825-32. http://www.journalcra.com DOI: https://doi.org/10.24941/ijcr.32437.09.2018 <p>Wali BN, Afifi IK, Balata JF & Badr NA: Effect of An Experimental Mouthwash Extracted from Miswak (Salvadora persica) on Cariogenic Bacteria and Dental Plaque Formation. International Journal of Current Research (2018)1 (10), pp 64070-75. http://www.journalcra.com/sites/default/files/issue-pdf/28254.pdf</p> <ul style="list-style-type: none"> • -Hamouda IM and Faramay AMG. Aged Flexural Properties of Vertex Thermosens versus Conventional Denture Base Materials for One Year Water Storage. Austin J Dent. 2018; 5(2): 1101 • -Ibrahim Mohamed Hamouda., et al. “Dimensional Changes and Water Sorption of Vertex Thermosense Versus a Conventional Heat Cured Denture Base Materials. Acta Scientific Dental Science 2.5(2018):63-66. • -Ibrahim M. Hamouda. Linear Dimensional Changes and Water Sorption of Acrylic Resin Denture Base Material Reinforced with Chopped Glass Fibers or Metal Fillers. Journal of Rehabilitation Robotics, 2018, Vol. 6. • -Mohammed Abdullah Basunduwah and Mohamed Fattouh Abdallah Ramadan, accuracy of metallic copings fabricated by different wax pattern

	<p>techniques. International Journal of Current Research Vol. 10, Issue, 05, pp.69830-69833, May, 2018</p> <ul style="list-style-type: none"> • Hanan Yahya Fallatah, Samia Mohamed El Sherief, Cone-Beam Computed Tomography Analysis of Centering ability and Transportation of Curved Root Canals Prepared with Three Rotary Nickel-Titanium systems (In Vitro-Study). International Journal of Surgery short reports: Vol:3, Issue:1, January-March 2018. • Samia Mohamed El Sherief: Micro CT comparative evaluation of efficacy of different rotary instrument systems for removal of gutta-percha from oval root canals: an in-vitro study Journal of Dental Research and Review, July-September 2018 • Samia Mohamed El Sherief: Clinical Evaluation of Root Canal Obturation Quality using two different sealers and obturation techniques by Cone Beam Computerized Tomography (in-vivo study) Samia M El-Sherief and Mohamed rabie Publishing: Egyptian Dental Journal, Vol. 64,4: 2068-2076, October, 2018 • Ali K. Barakat , Abdulaziz Gul , Reda.A.Nofal : Prevalence of Different Impacted Wisdom Angulations and Their Associated Pathological Lesions in Makkah Region, Egyptian dental journal (2018) vol11 number 4 I . S . S . N 0070-9484 • Mahmoud Hasan ALawur and Reda NoFal : clinical evaluation of the effect of standard and modified standard flaps design in the removal of mesio-angular impacted lower 3rd molar, Egyptian dental journal Vol. 64, 1:7, January, (2018) I . S . S . N 0070-9484 • Maher Y., Jastaniah S., Al-Gowaihi, R.S., et al: Bacterial contamination of water in dental units, Int. J. Med. Res.; (2018) 4(3);55-61. • Maher Y., Ezzat R.T., Al-Gowaihi, R.S., et al: Evaluation of air bacterial contamination in dental clinics, Int. J. Med. Res.; (2018) 4(3);73-78. • Al-Thubiani A.S.A., Maher Y.A., Adel Fathi et al: Identification and characterization of a novel antimicrobial peptide compound produced by Bacillus megaterium strain isolated from oral. Saudi Pharmaceutical Journal; (2018) 26(8):1089-1097. • Elkwatehy WM, Salama RI. Cariogram and Oratest in Caries Risk Assessment for School Children. J Oral Biol. 2018; 5(1): 6. • Rabab Ibrahim Salama, The Effects of Probiotics on the Salivary streptococcus Mutans and Lactobacilli Levels among Preschool Children: A
--	--

	Clinical Trial. Article 2, Volume 64, Issue 2 - April (Orthodontics, Pediatric & Preventive Dentistry), April 2018, Page 855-862
2019	<ul style="list-style-type: none"> • Alaa Moustafa Attia, Ali K. Barakat. Clinical Evaluation of Co-enzyme Q10 in Management of Chronic Periodontitis Patients: Mouth Split Study. International Journal of Health Sciences & Research. 2019, 9(1): 69-75. http://www.ijhsr.org/IJHSR_Vol.9_Issue.1_Jan2019/12.pdf • Mohammad Al-Isa, Alaa Attia, Mohanned Alotibi, Hashem Alhashemi, Fahad Althobiani, Sameh Baz. Effect of non-surgical periodontal therapy on the fibrinogen levels in chronic periodontitis patients. Saudi Dental Journal. Saudi Dental Journal (2019) 31, 188–193. https://www.sciencedirect.com/science/article/pii/S1013905218302979 • Eman A. El Ashiry, Najlaa M. Alamoudi, Najat M. Farsi, Amani A. Al Tuwirqi1, Moaz H. Attar, Hanan K. Alag, Alaa A. Basalim, Mohamed K. Al Ashiry The Use of Micro-Computed Tomography for Evaluation of Internal Adaptation of Dental Restorative Materials in Primary Molars: An In-Vitro Study International Journal of Pharmaceutical Research&Allied Sciences, 2019, 8(1):129-137 Research Article ISSN : 2277-3657 CODEN(USA) : IJPRPM • Chen CY, Hsu KC, Marghalani AA, Dhar V, Coll JA. Systematic Review and Meta-Analysis of Passive Lower Lingual Arch for Resolving Mandibular Incisor Crowding and Effects on Arch Dimension. Pediatr Dent. 2019 Jan 15;41(1):9-22. • Rasha Mohamed Taha and Rania Hanafi Mahmoud, Impact of antidepressant duloxetine on the lingual mucosa of male albino rats (an ultrastructural, and Immunohistochemical study. E.D.J. (2019) :Vol. 64, No. 4 • Esraa Saleh Heji, Hossa Yusof Al.Matrouk, Dr.Nada Ali AbdelAleem, Whitening Strips, are they safe and effective. Indo American JPS 2019, 06 (01), 2512-2519 • Amira M Gomaa, Hanadi A Lamfon and Yahia A Maher. Microbiological and -Immunological Effects of Monomer Free Thermosens and Nano Zirconia Oxide Reinforced Denture Base Resins on Controlled Diabetic Denture Wearers. E.D.J. (2019) :65 (1).

	<ul style="list-style-type: none"> • Elmarsafy L.H., Elbehairy R.A., Ahmed I.H., Khafagi M.G: Biological Behavior of 60/40 Biphasic Calcium Phosphate and Growth Hormone Mixture: In vivo study in dogs. Egyptian dental journal, January (2019); Vol. 65, No. 1 • Balhaddad AA, Kensara AA, Hidan D, et al. (December 2019) Bioactive Materials Toward dental caries: Exploring nanoparticle-based platforms and calcium phosphate compounds for dental restorative materials. Bioactive Materials. • El-Attar H, El-Kadi A, Rabie A, Ezz-el-Arab A, Salah N, Bedair T. Evaluation Of The Combined Orthodontic-Periodontal Therapy In The Management Of Extruded Anterior Teeth In Patients With Aggressive Periodontitis. IJHSR. December 2019; Vol.9; Issue 12. https://www.ijhsr.org/IJHSR_Vol.9_Issue.12_Dec2019/4.pdf • Samia Mohamed El Sherief Cone Beam Computed Tomography Assessment of MTA Efficacy as orthograde root canal filling materials after preparation using reciprocating motion analysis (Ex-vivo study). International Journal of Applied Dental Sciences 2019; 5(2): 467-472 • Samia Mohamed El Sherief Marginal Adaptation of a new Formulation of MTA Material used as Root-End Filling: A Scanning Electron Microscopy (SEM) Study. EgyptianDental Journal, July 2019 • Samia Mohamed El Sherief Bacterial leakage analysis of root canal obturated using single cone technique with three different root canal sealers and three different coronal restorative materials (in-vitro study). Egyptian Dental Journal, July 2019 • Samia Mohamed El Sherief CBCT Analysis of Root Canal Filling Using Different Obturation Techniques (In Vitro Study). Amjad Saud Alsharif and Samia Mohamed El Sherief. obturation [Journal of Dental SciencesRRJDS Volume 7 Issue 2 June, 2019.
2020	<ul style="list-style-type: none"> • Arwa K. Al-Zahrani, Rahaf S. Al-Sulimani , Mashael S. Al-Qahtani , Ibtesam K. Afifi: Hepatitis B Knowledge, Preventive Attitude and Vaccine Status of Dental Students and Interns at Umm Al-Qura University, Makkah, Saudi Arabia. Journal of Umm Al-Qura University for Medical Sciences 6 (1), (2020) 8-14 https://uqu.edu.sa/en/mj • Omair M. Bukhari, Ayman A. Ahmed, Ibtesam K. Afifi: Adherence of Umm Al-Qura University Dental Students to Infection Control Guidelines: A

Four Year – Auditing Report. Open Access Maced J Med Sci .
2020Apr.25];8(E):19-6. <https://oamjms.eu/index.php/mjms/article/view/4325>

- Salwa A. Aldahlawi, Ibtesam K. Afifi: Transmission Risk, Infection Control Challenge, and Clinical Implications. The open dentistry journal, Vol 14, June 2020 <https://benthamopen.com/ABSTRACT/TODENTJ-14-348>
- Hanadi S. Lingawi, Ibtesam K. Afifi: COVID-19 Associated Stress Among Dental Students. The open dentistry journal, November 2020, Volume 14:554-562. <https://opendentistryjournal.com/VOLUME/14/PAGE/554/>
- Naif M. Bafaraj, Mohammad A. Bafaraj, Duha Alzaidi, Razan. Alhajjaji, Hanouf Alharbi, Noura R. Alhomaiddh,i Hind H. Abdel-latif. Assessment of Oral Hygiene Knowledge, Attitude and Practice Among Children in Makkah City, Saudi Arabia: a Cross-Sectional Study. Journal of Umm Al-Qura University for Medical Sciences 6 (1), (2020) 1-3
- Kensara AA, Hefni E, Williams MA, et al. (September 2020) Microbiological Profile and Human Immune Response Associated with Peri-Implantitis: A Systematic Review. Journal of Prosthodontics.
- Ibrahim MS, Kensara AA, Garcia IM, et al. (May 2020) How We Are Assessing the Developing Antibacterial Resin-Based Dental Materials? A Scoping Review. Journal of Dentistry.
- Kensara AA, Saito H, Mongodin EF, Masri R (April 2020) Microbiological Factors of Peri-Implantitis: Methodologies for Biofilm Analysis. In: Ogata Y. (eds) Risk Factors for Peri-implant Diseases. Springer, Cham (Book Chapter)
- Saito H, Kensara AA, Masri R (April 2020) Microbiological Factors of Peri-Implantitis: Characteristics and Significance. In: Ogata Y. (eds) Risk Factors for Peri-implant Diseases. Springer, Cham (Book Chapter)
- Ashwag A. Barnawi, May M. Al-Guhi, Bayan S. Baraheem, Elaf M. Malki, Majed A. Almalki , Hoda A. Fansac. In Vitro Comparison of Gutta-Percha Removal Using XP Endo Finisher and ProTaper With or Without Organic Solvent by Scanning Electron Microscope. Journal of Umm Al-Qura University for Medical Sciences, (2020), 6 (2),8-12
- Rayan B. Yaghmoor, Wendy Xia, Paul Ashley, Elaine Allan and Anne M. Young. Effect of Novel Antibacterial Composites on Bacterial Biofilms. J. Funct. Biomater. 2020, 11, 55; doi:10.3390/jfb11030055
- Rayan B. Yaghmoor^{1,2} Jeffrey A. Platt² Kenneth J. Spolnik³ Tien Min Gabriel Chu² Ghaeth H. Yassen. Effect of Hydrogel-Based Antibiotic

Intracanal Medicaments on Push-Out Bond Strength. European Journal of Dentistry Vol. 14 No. 4/2020

- Mona T. Rajeh, Shahinaz N. Sembawa, Afnan A. Nassar, Seba A. Al Hebshi, Khalid T. Aboalshamat, Mohammed K. Badri. Social media as a learning tool: Dental students' perspectives. Journal of Dental Education 2020. <https://onlinelibrary.wiley.com/doi/abs/10.1002/jdd.12478>
- Mona Rajeh, Khalid Aboalshamat, Afnan Nassar, Mohammad Badri, Shahinaz Sembawa, Seba Al Habshi. Insights on using social media in dental education: A cross-sectional study in Saudi Arabia 2020. <https://opendentistryjournal.com/VOLUME/14/PAGE/717>
- Ibrahim Mohamed Hamouda and Majed Abudllah Mohammed Almalki, Effect and correlation of testing load and specimen's thickness on the hardness and percent depth of cure of condensable composite resins. Dent Oral Maxillofac Res, 2020 doi: 10.15761/DOMR.1000357
- Ibrahim M. H, Alaa M. (2020) Effect of aluminum oxide powder reinforcement on degree of conversion, monomer release and flexural strength of heat-cured acrylic resin. Biomedical Research and Clinical Reviews. 1(3); DOI: 10.31579/2692-9406/020
- Arwa Alsaggaf, A case control study to investigate the effects of denture wear on residual alveolar ridge resorption in edentulous patients, May 2020, Journal of Dentistry 98:103373 DOI: 10.1016/j.jdent.2020.103373
- Arwa Alsaggaf Interplay of different cancer treatments on dental implants: Retrospective analysis of a cohort, October 2020, Clinical Oral Implants Research 31(S20) DOI: 10.1111/clr.168_13644
- Arwa Alsaggaf Demystifying Dental implants in head and neck oncology patients, October 2020, Clinical Oral Implants Research 31(S20) DOI: 10.1111/clr.70_13644
- Magda MA Hassan, Wafaa H El-Hossary, Rania Hanafi (2020) Anti-inflammatory Thymoquinone and Muscle Regeneration in the Hamster Buccal Pouch-Induced Dysplasia. J Oral Health Dent Sci 4: 302
- Rania Hanafi, Rasha Mohamed Taha (2020) Immuno-Histochemical Study of the Potential Impact Effect of a Single Intra-Peritoneal Injection Dose

of Cisplatin on Stem Cells of Dental Pulp of Albino Rats. J Oral Health Dent Sci 4: 303

- Zeinab N. Emam □□Nada Ali A. Aleem, Influence of Different Materials and Preparation Designs on Marginal Adaptation and Fracture Resistance of CAD/CAM Fabricated Occlusal Veneers . Egyptian Dental Journal Vol. 66, 1:14, January, 2020
- Abdulaziz A Bakhsh et al: Antimicrobial Effectiveness of Calcium Silicate Sealers against a Nutrient-Stressed Multispecies Biofilm. J. Clin. Med. 2020, 9(9), 272 <https://doi.org/10.3390/jcm9092722>
- Mazen Ameen, Alaa Moustafa Attia, Anas Felimban,Tariq Al-Dweghri, Abdulrahman Fattni,Ehab Azab, Sameh Baz, Ahmed Dardir. Evaluation of cardiac biomarkers in smokers andnon-smokers with chronic periodontitis. International Journal of Health Sciences. 2020; 14(3):26-32. <https://ijhs.org.sa/index.php/journal/article/view/4814>
- Ahmed Alshareef, Alaa Attia, Mohammed Almalki, Faisal Alsharif, Ahmed Melibari, Bassel Mirdad, Ehab Azab, Abdel-Rahman Youssef, Ahmed Dardir. Effectiveness of Probiotic Lozenges in Periodontal Management of Chronic Periodontitis Patients:Clinical and Immunological Study. European Journal of Dentistry. 2020; 14:281–287. <https://www.ncbi.nlm.nih.gov/pmc/articles/PMC7274828/>
- Sherif S. Hassan, Mahmoud A. Attia, Alaa M. Attia, Reda A. Nofal, Adel Fathi. Distribution of Cytokeratin 17 in the Parenchymal Elements of Rat’s Submandibular Glands Subjected to Fractionated Radiotherapy. European Journal of Dentistry. 2020;14:480–487. <https://www.ncbi.nlm.nih.gov/pmc/articles/PMC7440947/>
- Bader S. Alghamdi, Abdullaziz M. Alzhrani, Faisal Y. Alfeifi, Fathy M. Elfasakhany, Alaa Moustafa, Ehab Azab, Mashael S. Alqahtani. Analysis of Interleukin-10 (-1082) G/A Gene Polymorphism in Chronic Periodontitis among Saudi Population. International Journal of Dentistry and Oral Science. 2020;7(8):796-800. <https://scidoc.org/IJDOS-2377-8075-07-803.php>

- Wahdan Elkawatihiy et al: Clinical evaluation of using benzydamine hydrochloride oral gel with intralesional corticosteroid injection for pain control in symptomatic oral lichen planus. (2020) Egyptian Dental Journal https://edj.journals.ekb.eg/article_86668_9bb47194e85203a5f289af1c574a4b93.pdf
- Wahdan Elkawatihiy et al: Effect of different remineralizing agents on the initial carious lesions – A comparative study. (2020) Saudi Dental Journal <https://www.sciencedirect.com/science/article/pii/S1013905219308120>
- Wahdan Elkawatihiy et al: The Efficacy of Resin Infiltrant and Casein Phosphopeptide–amorphous Calcium Fluoride Phosphate in Treatment of White Spot Lesions (Comparative Study).(2020), Journal of International Society of Preventive & Community Dentistry <https://www.jispcd.org/article.asp?issn=2231-0762;year=2020;volume=10;issue=4;spage=438;epage=444;aulast=Baafif>
- Wahdan Elkawatihiy et al: The Effect of Dental Rehabilitation under General Anaesthesia on Vital Health Parameters Of Children with Mental Retardation. (2020). International Journal of Dentistry and Oral Science. <https://scidoc.org/IJDOS-2377-8075-07-1001.php>
- Youssef, A.-R., Elsherief, S. Evaluation of the cytotoxic effects of a new Harvard MTA compared to MTA Flow and ProRoot MTA on human gingival fibroblasts. Saudi Dental Journal (2020), <https://doi.org/10.1016/j.sdentj.2020.04.009>
- Lama H. El-Marssafy , Hesham S Sadek, Fatma F Hussein, Mashael Alqahtani and Wahdan M Abdelghany. CLINICAL EVALUATION OF USING BENZYDAMINE HYDROCHLORIDE ORAL GEL WITH INTRALESIONAL CORTICOSTEROID INJECTION FOR PAIN CONTROL IN SYMPTOMATIC ORAL LICHEN PLANUS. EGYPTIAN DENTAL JOURNAL Vol. 66, 1:11, April, 2020
- Fatma F. Hussein* , Lama H. El-Marssafy**, Hesham S. Sadek*** and Mashael Alqahtani: RELATIONSHIP BETWEEN SERUM VITAMIN D LEVEL AND RECURRENT APHTHOUS ULCER. EGYPTIAN DENTAL JOURNAL Vol. 66, 1:9, April, 2020
- Shereen Mohamed Abdelmeguid, Alaa Makee, Khaled Aly Elbanna, Mohamed Fattouh Abdullah, Omar Ahmed Aboelela, Zeinab Nabil Emam:

Effect of Different Glaze Coating of Zirconia Based Ceramics on Surface Roughness and Shear Bond Strength. International Journal of Health Sciences and Research Vol.10; Issue: 2; February 2020 Website: www.ijhsr.org

- Zeinab N. Emam and Shereen M. El Sayed: COLOR STABILITY AND MICROSTRUCTURE CHANGES OF TWO PRESSABLE CERAMICS AFTER REPEATED FIRING PROTOCOLS. E.D.J. Vol. 66, 1:16, January, 2020
- Yasser Maher El-Bouhi: Effectiveness of two bioactive restorative materials in dental hard tissues' remineralization, as indicated by laser fluorescence: International Journal of Medical Research & Health Science January, 2020. <https://www.ijmrhs.com/medical-research/effectiveness-of-two-bioactive-restorative-materials-in-dental-hard-tissues-remineralization-as-indicated-by-laser-fluor.pdf>
- Salwa A. Aldahlawi and Ibtesam K. Afifi. COVID-19 in Dental Practice: Transmission Risk, Infection Control Challenge, and Clinical Implications. The Open Dentistry Journal, 2020; 14: 348. Electronic Publication Date: July 21, 2020 <https://benthamopen.com/FULLTEXT/TODENTJ-14-348>
- Walaa Babgi, Mashaal Alhajaji, Lujain Al-Mehmadi, Rokaia Elbaqli, Noha Khayat, Salwa Aldahlawi, Abdel-Rahman Youssef. Effect of root conditioning agents hyaluronic acid, EDTA and chlorhexidine on the attachment of human gingival fibroblasts to healthy root surface. Saudi Dental Journal (2020) <https://www.sciencedirect.com/science/article/pii/S1013905219312568>
- Reem A Alotaibi, Salwa Aldahlawi, Fatimah M Alyami: The Effects of Commiphora Myrrh Mouthwash Verses Chlorhexidine on Dental Plaque and Gingivitis: A Comparative Study. Journal of Research in Medical and Dental Science 2020, Volume 8, Issue 4, Page No: 65-70 <https://www.jrmds.in/articles/the-effects-of-commiphora-myrrh-mouthwash-verses-chlorhexidine-on-dental-plaque-and-gingivitis-a-comparative-study-54413.html>
- E. Heji, M. Bahmam, A. Bukhari , K Aboalshamat, L.Homida , S. aldahlawi: Periodontal Disease as a Predictor of Undiagnosed Diabetes or Pre - Diabetes in Dental Patients. Accepted in European journal of dentistry . August 2020

<https://www.thieme-connect.com/products/ejournals/pdf/10.1055/s-0040-1719208.pdf>

- S. aldahlawi: R E V I E W A Proposed Framework to Develop, Describe and Evaluate Peer-Assisted Learning Program. Dec2020 , advances in medical education <https://www.dovepress.com/a-proposed-framework-to-develop-describe-and-evaluate-peer-assisted-le-peer-reviewed-article-AMEP>
- Abu Nawareg M and Zidan A. Modification of Portland Cement Properties using Glycerin. International Journal of Health Sciences and Research. 2020; 10 (7): 168-178.
- A.Fattah RA, Fansa HA, A.Wahab S and Zidan AZ. Quantitative and Qualitative Assessment of Sealing Ability of Different Root Canal Sealing Materials. International Journal of Health Sciences and Research. 2020; 10 (1): 175-182.
- Dziejdzic, A., Tanasiewicz, M., Abed, HH., Dickinson, C. and Picciani, B., 2020, December. Are Special Care Dentistry Services Prepared for a Global Disruption in Healthcare? A Call for a Wider Promotion of Dental Conscious Sedation Training. Healthcare. Multidisciplinary Digital Publishing Institute.
- Mubaraki, S., Pani, S.C., Alseraihy, A., Abed, HH, and Alkhayal, Z., 2020. The efficacy of two different oral hygiene regimens on the incidence and severity of oral mucositis in pediatric patients receiving hematopoietic stem cell transplantation: A prospective interventional study. Special Care in Dentistry, 40(6), pp.566-573.
- Sharka, R., Abed, HH. and Dziejdzic, A., 2020. Can Undergraduate Dental Education be Online and Virtual During the COVID-19 Era? Clinical Training as a Crucial Element of Practical Competencies. MedEdPublish, Sep 2020.
- Sarah Mubaraki, Sharat Chandra Pani, Amal Alseraihy, Abed HH, Zikra Alkhayal. The efficacy of two different oral hygiene regimens on the incidence and severity of oral mucositis in pediatric patients receiving hematopoietic stem cell transplantation: A prospective interventional study. Special Care in Dentistry. 2020.

<ul style="list-style-type: none"> • Abed HH, Burke M, Fenlon MR, Scambler S, Scott SE. Use of dentures, receipt of information, quality of life, and oral function following radiotherapy for head and neck cancer. <i>Special Care in Dentistry</i>. 2020 Aug 10. • Ezzat YE, Sharika RM, Huzaimi AA, Al-Zahrani KM, Abed HH. The role of exercise therapy in managing post-radiotherapy trismus in head and neck cancer. <i>Journal of Taibah University Medical Sciences</i>. 2020 Aug 8. • Abed HH, Burke M, Fenlon MR, Scambler S, Scott SE. Denture use and dental risk factors associated developing osteoradionecrosis after head and neck radiotherapy: A retrospective analysis of hospital records. <i>Journal of Dentistry</i>. 2020 Aug 1;99:103410. • Abed HH, Abuljadayel J. “I have been refused to be treated by three dentists”: Barriers to patient care. <i>Special Care in Dentistry</i>. 2020 May 1. • Mohsen Aljabri, Aboelezz Kalboush and Abed HH. The prevalence of dental anxiety among psychiatric patients with depression and their preferred pharmacological management techniques for dental treatment. <i>The British Society of Advanced Anaesthesia in Dentistry Journal</i>. 2020; 36:42-47. • Abed HH, Obaid M, Al-Johani K. The association between medical diseases and orofacial abscess: A retrospective, hospital-based study. <i>The Saudi Dental Journal</i>. 2020 Apr 8. • Banjar A, Abdrabuh A, Al-Habshi M, Parambil M, Bastos P, Abed HH. Labial pyogenic granuloma related to trauma: A case report and mini-review. <i>Dental Traumatology</i>. 2020 Jan 9. • Abed HH, Burke M, Scambler S, Scott SE. Denture use and osteoradionecrosis following radiotherapy for head and neck cancer: A systematic review. <i>Gerodontology</i>. 2020 Jun;37(2):102-9. • Samia Mohamed El Sherief: Evaluation of the cytotoxic effects of new Harvard MTA compared to MTA Flow on human gingival fibroblast. <i>Saudi Dental Journal</i>, April (2020).04.009 • Zeinab N. Emam: THE EFFECT OF REPRESSING ON SURFACE TOPOGRAPHY AND MICROSHEAR BOND STRENGTH OF TWO PRESSABLE CERAMICS. <i>Egyptian Dental Journal Vol. 66, 1:12, April, 2020</i>

2021	<ul style="list-style-type: none"> • Saito H, Kensara AA, Masri R (February 2021) Current Concept in the Etiology and Development of Peri-implantitis: What You Should Know? Journal of Cosmetic Dentistry. • Rabab I Salama, Hoda A Fansa, Waleed G Taju. Comparing the Effect of Two Different Remineralizing Agents on Shear Bond Strength of Orthodontics Brackets. Int J Dentistry Oral Sci. 2021;08(04):2134-2139. • Amani M. Harrandah , Sasanka S. Chukkapalli , Indraneel Bhattacharyya , Ann Progulsk-Fox & Edward K. L. Chan Fusobacteria modulate oral carcinogenesis and promote cancer progression. Journal of Oral Microbiology Volume 13, 2021 - Issue 1 https://www.tandfonline.com/doi/full/10.1080/20002297.2020.1849493 • Elham Nafea Alsaahafi 1, Selvam Thavaraj 2, Nazanin Sarvestani 3, Ofra Novoplansky 4, Moshe Elkabets 4, Bushra Ayaz 3, Mahvash Tavassoli 5, EGFR overexpression increases radiotherapy response in HPV-positive head and neck cancer through inhibition of DNA damage repair and HPV E6 downregulation. https://www.kcl.ac.uk/news/identifying-the-possible-mechanism-of-inferior-response-of-hpv-positive-head-and-neck-cancers-to-cetuximab • Afnan A. Nassar, Abrar K. Demyati. Informed Consent in the Health Care System: An Overview from a Dental Perspective in Saudi Arabia 2021. https://www.karger.com/Article/FullText/514405 • Olfat Abdulsatar Ahmad, Jumanah Fawzi Qusty, Shahinaz Nabil Sembawa and Ibtesam Kamel Afifi: Basic Life Support Knowledge and Skills Among Students and Faculty Members at the College of Dentistry, Umm Al-Qura University, Makkah, Saudi Arabia. EC Dental Science 20.1 (2021): 01-10. https://www.econicon.com/ecde/ECDE-20-01593.php • Yasser Maher El-Bouhi: Sealing ability of flowable resin composites fissure sealants: Egyptian Dent Journal April,2021 https://www.google.com.eg/url?sa=t&rct=j&q=&esrc=s&source=web&cd=&cad=rja&uact=8&ved=2ahUKEwi-wMzhgffvAhX4hP0HHQq6AhIQFjACegQICxAD&url=https%3A%2F%2Fedj.journals.ekb.eg%2Farticle_157209.html&usg=AOvVaw2w870IsR8x8jJZhLSQdzVu
------	--

<ul style="list-style-type: none"> • Yasser Maher El-Bouhi • □ Wahdan al-Kawatikhi • □ Nada Ali A. Aleem, Effect of Aging on Mineral Content of Resin-Dentin Interface Treated with Total Etch Adhesives. 2021 Egyptian Dental Journal • Ghidaa Abdullah Yahya • □ Anwar Ahmed AlAlwi • □ Farah Hassan Shurayji • □ Waad Wael Baroom • □ Mona Rajeh • □ Nada Ali A. Aleem, Effectiveness of sodium fluoride varnish and/or laser to decrease post-bleaching hypersensitivity: a comparative study. Saudi Dental Journal 2021 • Abdulaziz A Bakhsh et al: A Review of Guidelines for Antibiotic Prophylaxis before Invasive Dental Treatments. Appl. Sci. 2021, 11(1), 311; https://doi.org/10.3390/app11010311 • Abdulaziz A Bakhsh et al :The impact of radiotherapy on pulp vitality in patients with head and neck cancer: A systematic review - accepted but not yet published online • Abdulaziz A Bakhsh et al: Root Resorption in the 12th edition of Pathways of the Pulp • Wahdan Elkawatihy et al: Sealing ability of flowable resin composites fissure sealants. (2021) Egyptian Dental Journal https://edj.journals.ekb.eg/article_157209_d67314eb8207fc84a4a2a0fdce2e15b3.pdf • Wahdan Elkawatihy et al: Golden Standard and Golden Proportion of Maxillary Anterior Teeth Among Saudi Population in Makkah. (2021) Journal of International Society of Preventive & Community Dentistry. Accepted for publication • Wahdan Elkawatihy et al: Effect of Aging on Mineral Content of Resin-Dentin Interface Treated with Total Etch Adhesives. (2021) Egyptian Dental Journal. Accepted for publication • Salwa aldahlawi & dalia Nourah: Should glycemic control guide dental implant treatment in patients with diabetes ? Implant survival. Accepted for publication March 2021, clinical, investigative, experimental dentistry • Shahad H. Rajab; Lujain K. Al-Hindi; Sahar M. Elmarsafy : Evaluation of Coconut Oil Pulling vs. Whitening Mouthwash as Home Teeth Whitening Methods. ADJ-for Girls, Vol. 8, No. 1, January (2021) — PP. 35:44

- Abu Nawareg M, Fahmy O, AbdelRahman G, Zidan A and Habib N. Permeability of Modified Dentinal Surfaces. International Journal of Health Sciences and Research. 2021; 11 (4): Accepted and in press.
- Abu Nawareg M and Zidan A. Color Stability of Heat-Cured Versus Self- Cured Provisional Restorative Materials. International Journal of Health Sciences and Research. 2021; 11 (3): 44-50.
- Abed HH, Burke M, Fenlon MR, Scambler S, Scott SE. Dentists' perspectives on denture provision after radiotherapy for head and neck cancer: An exploratory study using the theoretical domains framework. British Dental Journal. 2021 (Article in press).
- Alhabshi, M., Attas, S., Melebari, L., Parambil, M., Kensara, J., Alturki, M. and Abed, HH., 2021. Tooth autotransplantation in a diabetic patient with 2-year follow-up. General Dentistry, 69(2), pp.48-50.
- Alhussain, A., Alkhayal, Z., Ayas, M. and Abed, HH, 2021. Prevalence and risk factors of oral mucositis in paediatric patients undergoing haematopoietic stem cell transplantation. Oral Diseases.
- Mushriq Abid, Dheaa Al-Groosh,1 Arkadiusz Dziedzic, Abed HH. Parents' knowledge and experience concerning presurgical orthopaedic management for infants with cleft lip and palate. Journal of Orthodontic Science. 2021 (Article n press).
- Abed HH, Francesco Mannocci, Abdulaziz Bakhsh. The impact of radiotherapy on pulpal blood flow in patients with head and neck cancer: A systematic review. Saudi Endodontic Journal. 2021 (Article in press).
- Reslan MR, Osman E, Segaan L, Rayyan M, Joukhadar C, Fattouh M: Comparison between Integrated and Parallel Interlock Designs of an Extracoronary Attachment-retained Distal Extension Removable Partial Dentures: A Clinical Trial. J Int Soc Prev Community Dent. 2021 Jan 30;11(1):41-49. doi: 10.4103/jispcd.JISPCD_337_20. PMID: 33688472; PMCID: PMC7934830
- Aseel Khalid Kufiyah, Ahmed Mohammad Hassan Bagasi, Sultan Mohammed Nawlalili, Duaa Saleh Bazaid, Abdullah Abdulrahman Marghalani, Adel Fathi: Effect of Zamzam Water on Microhardness of Primary Tooth Enamel After Erosion Induced by Claritin Syrup: An In-vitro Study.

JJournal of Int. Society of Prev. & Commu. Dentistry, April 15, 2021, IP: 178.86.72.115]

Summary table of published research over the last 10 years:

Year	Number of published research.	Number of interns and students who published their research.	Number of faculty who published their research.
2010-2011	1	0	2
2011-2012	1	0	2
2012-2013	3	0	4
2013-2014	4	0	3
2014-2015	18	0	15
2015-2016	20	0	11
2016-2017	22	4	14
2017-2018	35	45	30
2018-2019	50	26	29
2019-2020	14	10	12
2020-2021	57	31	48
2021-2022	27	12	20
Total	252	128	190

8. Scientific Research Activities Unit:

8.1. Academic Year 2020/2021:

- 1- Two journal clubs were made to discuss scientific papers from well-known journals in the field of dentistry. The presentations included students, internships and faculty members in the Faculty of Dentistry.

In the first presentation, student in the fifth year of dentistry, Ibrahim Al-Nafie, discussed a scientific paper on the latest techniques in the field of endodontics. The number of attendees was 30, including faculty members, interns and students.

In the second presentation, the internship doctor, Dr. Manal Bakhsh, discussed a scientific paper on the use of blood cells in the treatment of dental nerves. and attended Discussion 26 faculty members, interns and students.

8.2. Academic Year 2021/2022:

Seven Journal clubs were done by students and interns. Each journal club discussed a paper from prestigious journal. A faculty member from the same specialty helped student/intern understand and make the presentation. The journal clubs from different fields in dentistry including endodontics, oral biology, oral surgery and orthodontics.

Journal Club Day	Paper's title	presenter	# Audience	Mode
ديسمبر-21-08	Bifid Mandibular Canal: A case review and retrospective review of CBCTs	Shrouq Alsharif 4th year	18	Virtual

يناير-22-20	Pulp regeneration By transplanation of dental pulp stem cells in pulpitis: A pilot clinical study	Thikra Alsharif 5th year	16	Virtual
يناير-22-27	Unique Oral presentation of Deep Fungal infections: A report of four cases	Hanan Alosaimi 4th year	21	Virtual
فبراير-22-09	The contribution of Artificial intelligence to reducing the daignsostic delay in oral cancer	Razan Alhazmi 4th year	19	Virtual
فبراير-22-15	The development of an index of orthodontic treatment priority	Mustafa Almutawif & Hamza Kattan (Interns)	28	physical attendance
مارس-22-01	Bacteriophages in dentistry-state of art and persepectives	Rawan alhazmi & rawan alzhazrani	22	physical attendance
مارس-22-22	An in vitro investigation of accuracy and fit of conventional and CAD/CAM Removable partial denture frameworks	Ghaday Sayyam 4th year	20	physical attendance
مارس-22-29	Accuracy and perceptions of teledentistry in KSA during the COVID-19 pandemic: A single-centre randomised controlled trial	Saif Al-humaidi (intern)	15	physical attendance

Summary table of the activities

Year	No of Activities	Activity Type	No. Of student's participation.	No. Of staff supervision	No of Audiences
2020-2021	3	Two Journal clubs One Annual Research Day (ARD)	2 ARD will be discussed in a different table.	2 ARD will be discussed in a different table.	26 ARD will be discussed in a different table.
2021-2022	9	Eight Journal club. One Annual Research Day (on going)	10	9	159

9. Laboratory Research Unit.

1- A mechanism was created for the use of the scientific research lab by faculty members at the university and from other universities. An electronic form was also created to facilitate the registration process in the laboratory.

2- There are several existing research projects in the lab by students and faculty members.

The following table represent the research projects in the laboratory during the academic year of 2022/2021

Name	Supervisor	Research Project	IRB
ألاء الأندونوسي ونام كعكي ملاذ مندوره جمانة باحاذق مييار سبجي	اماني حرنده	Cytological changes among conventional and electronic cigarette smokers in Makkah region: A cross sectional study	×
اروى خضر الزهراني رهمف سعود السليماني	ناديه بدر ابتسام عفيفي	The effectiveness of salvadora persico extract as intracanal medicament: in vitro study	√
حسن سالم	وليد تاجو	The effect of two different remineralizing agents against white spot lesions: in vitro study	√
شقران العبادي مشعل بقري	ابراهيم حموده	Water sorption and solubility of nanofilled composite resin in different mouthwashes	√
ملاذ مندوره انوار قرشي	ندى على عبد العليم	Color stability and surface roughness of universal shade resin composite in natural teeth: in vitro study	√
د. ايهاب عزب د. علاء مصطفى د. وائل يغمور د. احمد درديري د. عبد الرحمن يوسف	NA	The effect of non-surgical periodontal therapy on gingival crevicular fluid and salivary levels of sclerostin and dickkopf-related protein 1 in smoker and non-smoker chronic periodontitis patients	√
عبد اللطيف د. بوعزاوي (عمادة البحث العلمي) عبد الرحمن يوسف د.	NA	Nanoptircels for drug targeting	√

مصطفى فيصل المطوف خالد رجاء الثبيتي فيصل خالد العتيبي محمد رضوان ايهاب على السيد	عبد الرحمن يوسف	Prevalence of Pseudomonas Aeruginosa in dental units' waterline	
د. داليا بخارى (جامعة الملك عبدالعزيز) عبد الرحمن يوسف.د	NA	The Effect of Heat Emission from Light-Curing Units on the Immediate dental implant prosthesis soft tissue profile	

Summary table

Number of Researches conducted in the laboratory	Number of UQU Staff	Number of Students.	No of Researchers outside UQU Dent.
9	11	17	2

10. Annual Research Day:

Academic Year 2021/2022:

1. A committee was formed to organize and supervise the annual research day for this year.
2. The registration and abstract submission for annual research day is open.

The following table shows the Annual research day over the past 10 years.

Projects	Indicators	2011-2012	2012-2013	2013-2014	2014-2015	2015-2016	2016-2017	2017-2018	2018-2019	2019-2020	2020-2021
Plan and organize an Annual Research Day For the Faculty members, Students and Guests	To hold the ARD annually	Yes	Yes	Yes	Yes	Yes	-	-	Yes	No	Yes
	Participating Faculty Members	10	30	30	35	45	-	-	50	-	40
	Participating Students	40	50	120	60	80	-	-	60	-	50-60
	Participating Guest Participants	0	10	20	25	30	-	-	10	-	-
	Total Number	0	22	44	30	32	-	-	40	-	17

	of Posters										
	Total Number of Oral talks	0	0	2	4	4	-	-	-	-	17
	Number of Awards Presented	0	0	4	6	10	-	-	10	-	3

11. Program Performance Indicators that are Related to The Scientific Research:

Standard	Code Key	Performance Indicators	Target	Value 2018-2019	Value 2019-2020	Value 2020-2021
Teaching staff	KPI-P-14	Percentage of publications of faculty members	60%	39%	60%	38%
	KPI-P-15	Rate of published research per faculty member	0.6	0.53	1.50	1.12
	KPI-P-16	Citations rate in refereed journals per faculty member	2	NA	NA	1.19

12. Challenges and development opportunities:

12.1. Obstacles to scientific research:

- 1- The lack of financial allocations for scientific research.
- 2- The lack of adequately equipped research laboratories to serve most of the research ideas related to the scientific fields of dentistry.
- 3- There is no link between scientific research and practical application in the society.
- 4- The absence of real support for scientific research in the fields of dentistry from the private sector and businessmen.
- 5- Weak communication and lack of coordination between the departments within the faculty and between the local, regional or international research centers.
- 6- There are no postgraduate programs at the faculty.
- 7- Lack of a database of college research or research activities (subjects) for faculty members.

12.2. Research development opportunities in the faculty:

- 1- The presence of qualified faculty members with experience and academic certificates, and the diversity of scientific disciplines under the umbrella of different scientific disciplines.
- 2- Provides the ability and desire of most of the faculty members present in the department, as well as those returning from recent scholarships, to keep pace with the scientific development in the research process.
- 3- Increasing demand from male and female students, internship students and graduates to conduct research related to their field of study and specializations to increase their chances of enrolling in various postgraduate programs.

- 2- The existence of some limited facilities at UQUdent to conduct scientific research, represented in the high demand of patients for treatment in the Dental Teaching Hospital, which allows researchers the opportunity to conduct some research to study oral diseases of priority in the Meccan society and also benefit from the diagnostic radiology units to do some research.

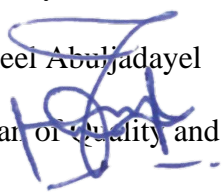
13. Preparation team:

1. Dr. Amani Harrandah.
2. Dr. Hind Abdullatif.
3. Dr. Elham Alsahafi.
4. Dr. Abdulrahman Yousef.
5. Dr. Fahad Baktian.
6. Dr. Amin Marghlani.
7. Dr. Mohammed Alharthy.
8. Dr. Khaled Abualshammat.

Approved by:

Dr. Jameel Abuljadayel

Vice Dean of Quality and Development, 1/4/2022





Umm Al Qura University
Faculty of Dental Medicine
Vicedeanship of Quality and Development
Bachelor Degree in Dental Medicine Program
Scientific Research Office Booklet
Academic Year 2020-2021